

Influence from Naha

Influence from Shuri



Li Shixian (1834 – 1865)
Calling Crane Style

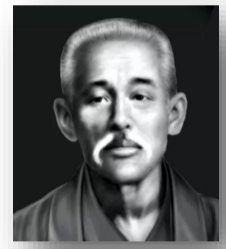


Kwan Pang Yuiba (1828-1912)
Crying Crane



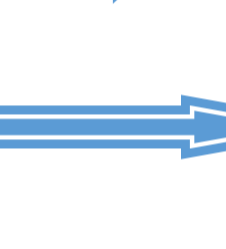
Ryo Ryo Ko (1873 - 1915)
Whooping Crane Fist

Wai Xinxian (1793 – 1894)
Mantis Style

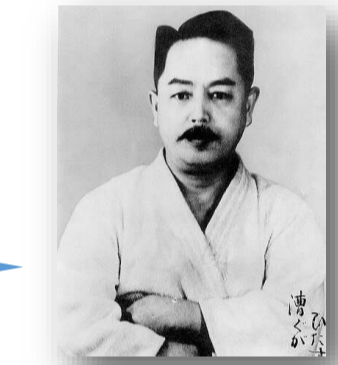


Sheiso Aragaki (1840 - 1920)
Tode

Kanryo Higaonna (1853 - 1915)
Naha-te



Go Kenki/Wu Xianghui (1886 - 1940)
Whooping Crane Style



Kenwa Mabuni (1892–1952)
Shito-Ryo

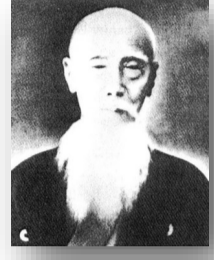
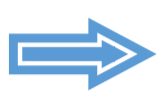
Chatan Yara (1668 – 1756)
Te



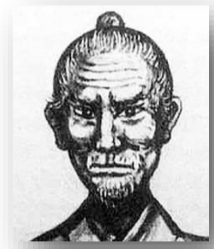
Peichin Takahara (1683 – 1760)
Ch'uan Fa



Kwang Shang Fu/ Kūsankū (1670 –1762)
Ch'uan Fa



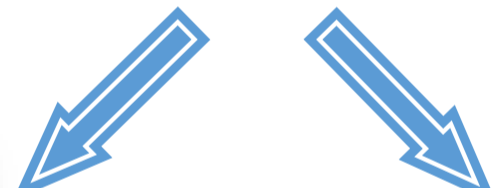
Sakugawa Kanga (1733 – 1815)
Te



Matsumura 'Bushī' Sōkon (1809–1899)
Shuri-te



Yatsune 'Ankō' Itosu (1831–1915)
Shuri-te



Manzo Iwata (1924–1993)
8th Dan Shito-Ryo

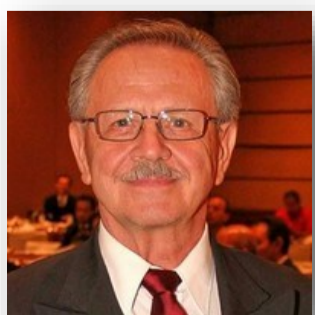


Tsutomu Yoneda (1931 -)
8th Dan Shito-Ryo



Kunio Murayama (1944–)
8th Dan Shito-Ryo

Kong-Wing Loh (1952–)
8th Dan Shito-Ryo



Sam Moledzki (19..–)
8th Dan Shito-Ryo



Perry F Bell (1959–)
5th Dan Shito-Ryo